



# ARMORSOURCE

## MISSION CRITICAL BALLISTIC SOLUTIONS



MODEL:

# AS-500

DESC:

**U.S. ARMY ADVANCED COMBAT HELMET. THE CORNERSTONE OF OUR LEGACY SERIES.**

The ArmorSource AS-500 ACH (Advanced Combat Helmet) is a cornerstone within our line up of legacy model products and has built a reputation as a longstanding, trusted U.S. Army combat helmet. This battle-proven ballistic solution provides high levels of protection against a wide spectrum of small fragment and handgun bullets and has undergone extensive testing methods to improve the safety of today's service member in the field.

## FEATURES

**PROVIDES HIGH PROTECTION AGAINST A WIDE SPECTRUM OF SMALL FRAGMENTS** as well as handgun bullets

**BATTLE-PROVEN** and used extensively in Iraq and Afghanistan theaters

Features a **SHAPE USED AND ACCEPTED BY THE U.S. GOVERNMENT** and other military organizations worldwide

Proudly **MADE IN THE USA**

## SYSTEM SNAPSHOT

SHAPE/DESIGN	U.S. Army ACH Geometry
SHELL CONSTRUCTION	Proprietary blend of Aramid and Composite Materials
BALLISTIC PROTECTION	U.S. Army GL/PD 19-06 (to replace CO/PD 05-04); NIJ level IIIA 0108.01/0106.01
FRAGMENTS PROTECTION	2,4,16,17 and 16 grain in accordance with U.S. Army GL/PD 19-06
9MM BFD/TRAUMA	Meets the U.S. Army GL/PD 19-06
ENVIRONMENTAL / MECHANICAL PROTECTION / DESIGN	Meets the U.S. Army GL/PD 19-06
CERTIFICATION	From an NIJ certified laboratory
AVAILABLE HEAD SIZES	X-Small / Small / Medium / Large / X-Large / XX-Large
AVAILABLE SHELL SIZES	Small / Medium / Large / X-Large
EXTREME TESTING CONDITIONS	Performs under temperature between 160 °F (71°C) and -60°F (-51°C); Performs after 3 hours sea water immersion
CONFIGURATION	100% Boltless (Durability Verified)
USE	Military Troops; Law Enforcement

## AVAILABLE COLORS



FOLIAGE GREEN



OLIVE GREEN



SNIPER BLACK



DESERT TAN



COYOTE BROWN

## SHELL INFO

SHELL THICKNESS	0.4" (±0.1") / 10 mm (±2.5mm)
FINISHED SHELL NOMINAL WEIGHT*	Medium 2.7 lbs. / 1.22 Kg; Large 2.9 lbs. / 1.32 Kg; X-Large 3.2 lbs. / 1.45 Kg
NOMINAL SURFACE AREA*	Regular-cut: Medium - 164 in2 (1,064 cm2); Large - 176 in2 (1,134 cm2); X-Large 193 in2 (1,243 cm2)

## AVAILABLE CUTS



HIGH-CUT



MID-CUT



REGULAR-CUT

## SYSTEM INFO

FINISHED HELMET NOMINAL WEIGHT **	Medium 3.1 lbs. / 1.4 Kg; Large 3.3 lbs. / 1.5 Kg; X-Large 3.6 lbs. / 1.63 Kg
FULLY LOADED HIGH-CUT NOMINAL WEIGHT ***	Medium 3.1 lbs. / 1.42 Kg; Large 3.3 lbs. / 1.52 Kg; X-Large 3.6 lbs. / 1.66 Kg

\* Regular-cut shell \*\* A Regular-cut helmet installed with retention and suspension systems  
\*\*\* Special Command configuration: the complete kit, with ASR side-rails, NVG Shroud and Operational Loop System



## SYSTEM CAPABILITIES CHECKLIST

BALLISTIC PERFORMANCE*		ENVIRONMENTAL PERFORMANCE*		COMPATIBILITY AND ADD-ONS*	
U.S. ARMY ACH GEN II SPECS	✓	U.S. ARMY ACH SPECS	✓	UNIVERSAL SIDE-RAILS	✓
NIJ LEVEL IIIA	✓	BLUNT IMPACT	✓	NVG MOUNT	✓
FRAGMENTATION PROTECTION	✓	COMPRESSION RESISTANCE	✓	OPERATIONAL LOOP SYSTEM	✓
BFD / TRAUMA	✓	ACCELERATED AGING	✓	COUNTERWEIGHT	✓
		ADVANCED BOLTLESS ADHESIVE SYSTEM	✓	CAMOUFLAGE COVER	✓
		IMPACT RESISTANT	✓		

\* In accordance with ArmorSource technical specifications and applicable standards

## AVAILABLE RETENTION SYSTEMS



R-2

**ARMORSOURCE STANDARD HARNESS SYSTEM (ASHS)**  
(FOLIAGE / OLIVE / BLACK / TAN)



R-4

**ARMORSOURCE STANDARD BOLTLESS HARNESS SYSTEM (ASBS)**  
(FOLIAGE / OLIVE / BLACK / TAN)



R-3

**TEAM WENDY® BOLTED CAM-FIT™**  
(GREEN / BLACK / TAN)



R-10

**TEAM WENDY® BOLTLESS CAM-FIT™**  
(GREEN / BLACK / TAN)

## AVAILABLE SUSPENSION SYSTEMS



P-2

**ARMORSOURCE STANDARD PADS SYSTEM**  
(BLACK)



P-3

**TEAM WENDY® ZAP™**  
(FOLIAGE)



P-4

**TEAM WENDY® EPIC AIR LINER SYSTEM™**  
(FOLIAGE)



P-11

**D30 9-PADS SYSTEM**  
(BLACK)



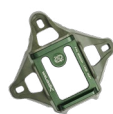
P-10

**D30 7-PADS SYSTEM**  
(BLACK)

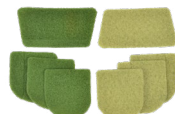
## AVAILABLE ACCESSORIES



**ASR UNIVERSAL SIDE RAILS**  
(BLACK / OLIVE / FOLIAGE TAN / COYOTE)



**WIL3 UNIVERSAL NVG**  
(BLACK / GREEN / FOLIAGE / TAN)



**OPERATIONAL LOOP SYSTEM**  
(BLACK / OLIVE / FOLIAGE TAN / COYOTE)



**COUNTERWEIGHT**  
(BLACK / GREEN / TAN)



**HELMET COVER**  
(BLACK / OLIVE / FOLIAGE TAN / COYOTE)



**CARRYING BAG**  
(TAN / COYOTE)



**STRAP EXTENDER**  
(BLACK / GREEN / TAN)

OFFICIAL SUPPLIER TO



U.S. Department of Defense

